

goto;
chicago



Click 'Rate Session'

Rate **5** sessions to get the
supercool GOTO reward

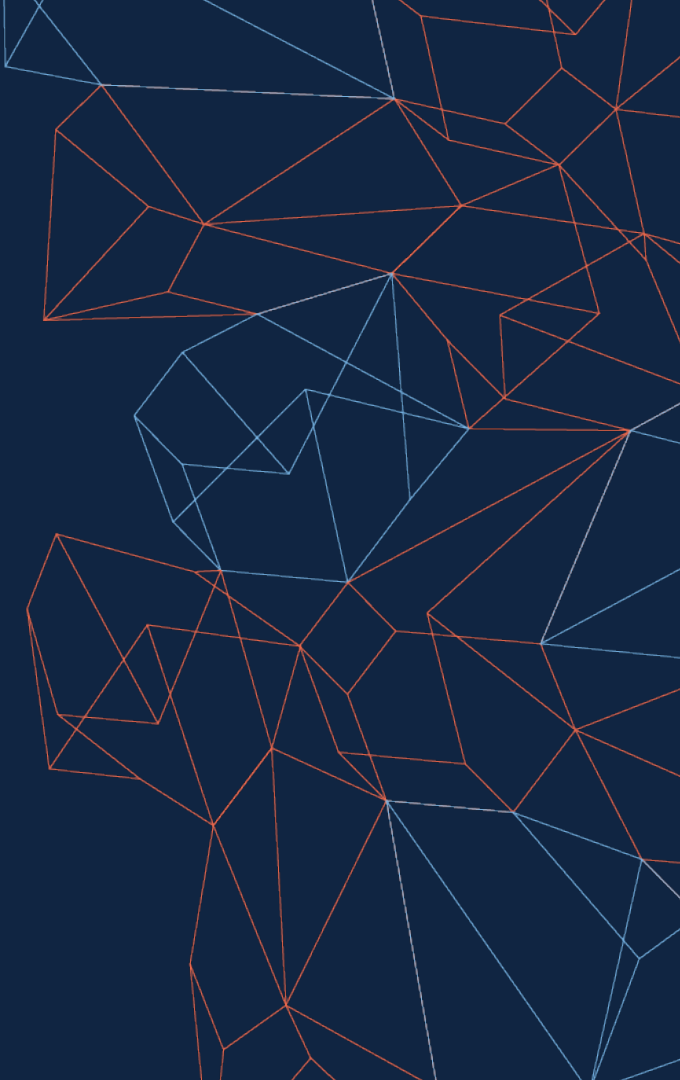


JOURNEYS TO CLOUD NATIVE ARCHITECTURES

SUN, SEA & EMERGENCIES

Nicki Watt - CTO

@techiewatt





How do you learn?

**How do you decide what
works, and what
doesn't?**



Feeling pain Learning from failures



JOURNEYS TO CLOUD NATIVE ARCHITECTURES

SUN, SEA & EMERGENCIES





JOURNEYS TO CLOUD NATIVE ARCHITECTURES

SUN, SEA & EMERGENCIES





ABOUT ME / OPENCREDO

- CTO at OpenCredo
- Hands on software development consultancy
- Cloud Native; Data Engineering & ML



AGENDA OVERVIEW

- **OVERVIEW - THE DREAM**
- **ISSUES & CHALLENGES**
- **CONCLUSION**

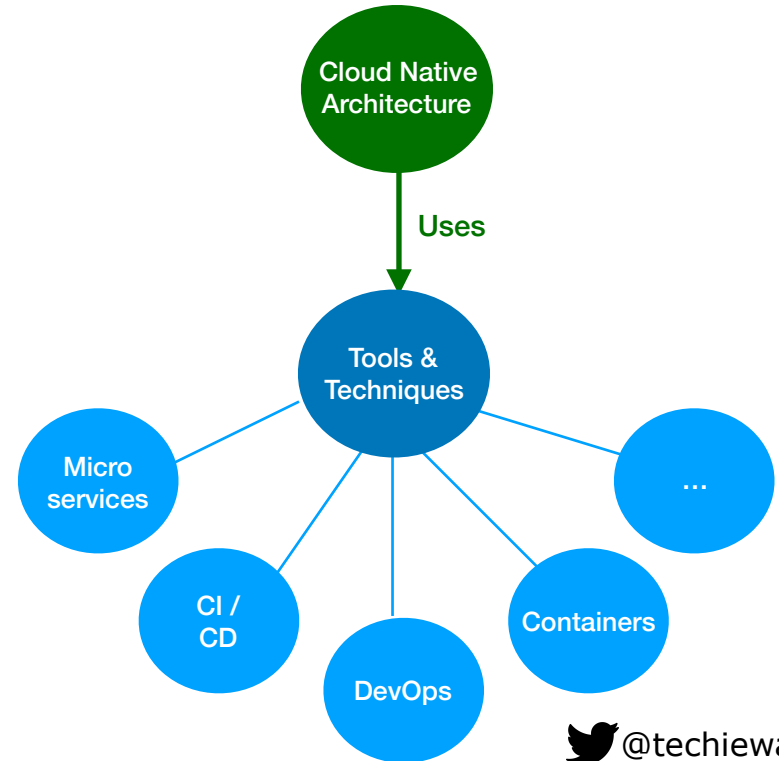


Overview - The Dream



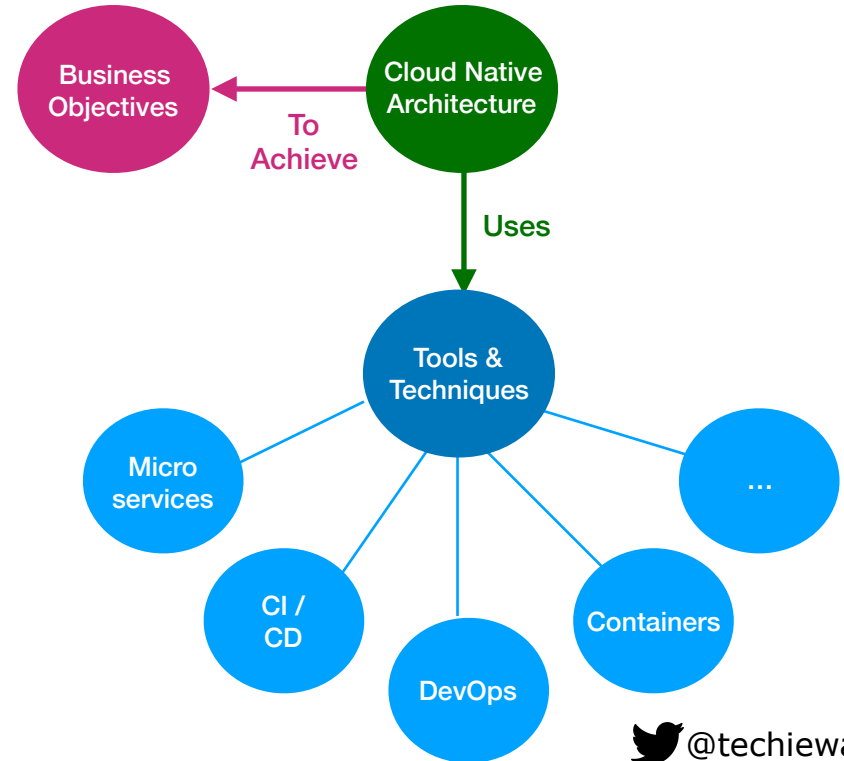


THE CLOUD NATIVE DREAM (BUSINESS DRIVERS)



THE CLOUD NATIVE DREAM (BUSINESS DRIVERS)

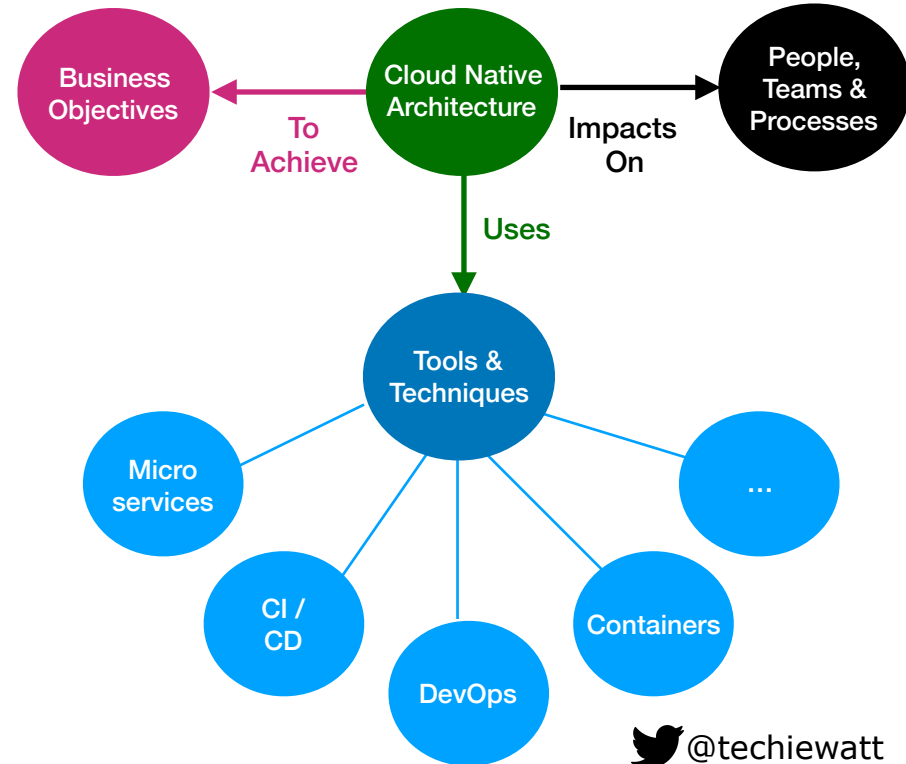
- ▶ Faster Time to Market
- ▶ Allow business to grow (Scalability)





THE CLOUD NATIVE DREAM (BUSINESS DRIVERS)

- ▶ Faster Time to Market
- ▶ Allow business to grow (Scalability)





“Going Cloud-Native” is an approach to build and run applications capable of exploiting and taking advantage of modern, scalable cloud like delivery techniques and tools

in order to meet business objectives!



Check In ...

Underlying Challenge:

Too Much Baggage



[Photo by Laura Gilmore \(Flickr\)](#)



THE CLOUD NATIVE JOURNEY

- ▶ Needs A Different
 - ▶ Approach
 - ▶ Tooling
 - ▶ Skills



[Photo by Laura Gilmore \(Flickr\)](#)





Departure . . .
Arrival . . .
The Holiday Begins . . .



Issues & Challenges



#1 The Jones'



#1 Tackling Too Much Too Quickly

(Sunburn)





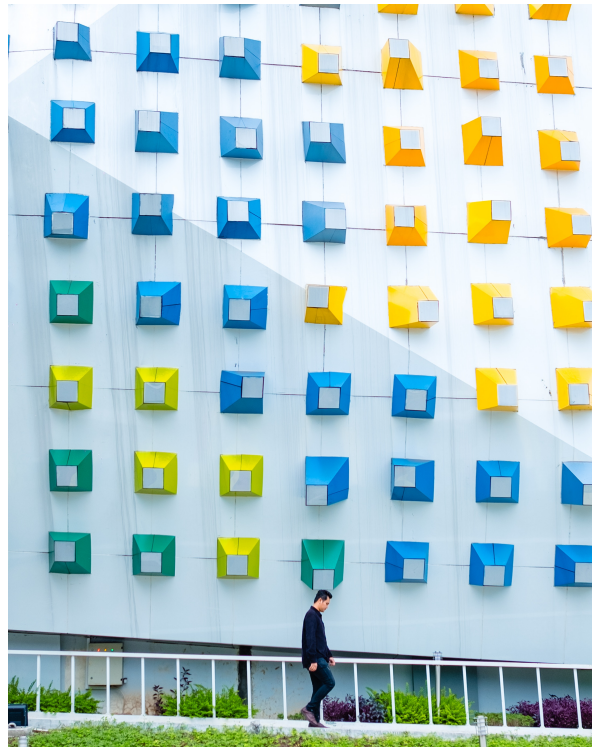
TACKLING TOO MUCH, TOO QUICKLY

**Can't expect to gain a
fully rounded & reliable
cloud native system overnight!**



TACKLING TOO MUCH, TOO QUICKLY

- Many Moving Parts
 - App Architecture
 - Ops
 - Infrastructure





TACKLING TOO MUCH, TOO QUICKLY - OBSERVATIONS

- Quality is Compromised
- Pain is delayed - focusing on easy not risky
- Operate under a false sense of security



TACKLING TOO MUCH, TOO QUICKLY - OBSERVATIONS

- Quality is Compromised
- Pain is delayed - focusing on easy not risky
- Operate under a false sense of security



image credit: <http://www.guinnessworldrecords.com/world-records/most-tennis-balls-held-in-the-mouth-dog>



TACKLING TOO MUCH, TOO QUICKLY - OBSERVATIONS

- Quality is Compromised
- Pain is delayed - focusing on easy not risky
- Operate under a false sense of security
 - Only happy path testing
(platform testing neglected)



TACKLING TOO MUCH, TOO QUICKLY - OBSERVATIONS

- Quality is Compromised
- Pain is delayed - focusing on easy not risky
- Operate under a false sense of security
 - Only happy path testing
(platform testing neglected)
 - Lack of robust CI/CD - Inconsistent environments



TACKLING TOO MUCH, TOO QUICKLY

**Slow Down
Take Baby Steps
Focus On Quality!**



#2

Deepak and friends

#2

Relying on a Surface Level Understanding

(Caught In Deep Water)





RELYING ON A SURFACE LEVEL UNDERSTANDING

**Distributed Systems are hard.
The devil is in the detail
And the detail matters**



RELYING ON A SURFACE LEVEL UNDERSTANDING

- **Skills & Real World Experience**
 - Kubernetes in 24 hours != Expert
 - Outsource commodity, in-house business value



RELYING ON A SURFACE LEVEL UNDERSTANDING

- **Skills & Real World Experience**
 - Kubernetes in 24 hours != Expert
 - Outsource commodity, in-house business value
- **Missing out on optimising for the Bigger Picture**
 - Artificial Boundaries



RELYING ON A SURFACE LEVEL UNDERSTANDING

- **Skills & Real World Experience**
 - Kubernetes in 24 hours != Expert
 - Outsource commodity, in-house business value
- **Missing out on optimising for the Bigger Picture**
 - Artificial Boundaries
 - Artificial Centralisation



RELYING ON A SURFACE LEVEL UNDERSTANDING

- **Other War Stories ...**
 - DRY Dependency Hell
 - The Singularity Fallacy



RELYING ON A SURFACE LEVEL UNDERSTANDING

Gain basic skills & expertise

**Make commodity problems
somebody else's**

**Learn by
Optimising for the bigger picture**





#3

Susie & Jacob



#3 Ineffective Tools & Processes

(Between a rock and a hard place)



Me

Simultaneously
petrified & enjoying
myself ...





INEFFECTIVE TOOLS & PROCESSES

- Often traditional tools just don't cut it



INEFFECTIVE TOOLS & PROCESSES

- **Mileage varies ...**
 - Slow you down
 - Take you the long way round
 - Downright hurt you in long run
 - More Forward Looking



INEFFECTIVE TOOLS & PROCESSES

- **Slow you down**
 - Unnecessarily Heavy tooling
(Some Enterprise Databases,
Base Container Images)



INEFFECTIVE TOOLS & PROCESSES

- **Take you the long way around**
 - DIY or “Build Your Own” category



INEFFECTIVE TOOLS & PROCESSES

- **Downright hurt you**
 - No API
 - Non Automatable
 - Horizontally challenged



INEFFECTIVE TOOLS & PROCESSES

- **More forward looking ...**
 - Imperative → Declarative



INEFFECTIVE TOOLS & PROCESSES – SO WHAT SHOULD YOU USE?



CLOUD NATIVE TRAIL MAP

The Cloud Native Landscape (CNLF) has a large number of others. The Cloud Native Trail Map is a recommended process for finding open source, distributable technologies. At each step, you can choose a vendor-supported offering or the full journey and everything after step 10 is optional based on your circumstances.

HELP ALONG THE WAY

A. Training and Certification
Consider training offerings from CNCF and then take the exam to become a Certified Kubernetes Administrator or a Certified Kubernetes Application Developer.
cncf.io/certification

B. Consulting Help
If you want assistance with Kubernetes and the surrounding ecosystem, consider leveraging a Kubernetes Certified Service Provider.
cncf.io/csp

C. Join CNCF's End User Community

For companies that don't offer cloud native services externally.
cncf.io/end-user

WHAT IS CLOUD NATIVE?

Cloud native technologies empower organizations to build and run scalable applications in modern, dynamic environments such as public, private, and hybrid clouds. Containers, service meshes, microservices, immutable infrastructure, and declarative APIs exemplify this approach.

These techniques enable loosely coupled systems that are resilient, manageable, and observable. Combined with robust automation, they allow engineers to make higher-velocity changes frequently and predictably with minimal risk.

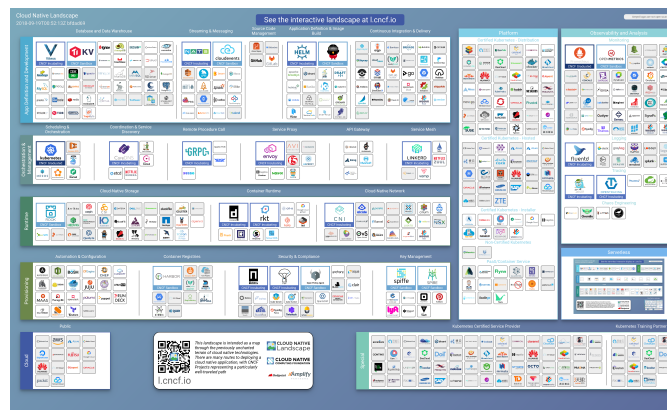
The Cloud Native Computing Foundation seeks to drive adoption of this paradigm by fostering and sustaining an ecosystem of open source, vendor-neutral projects. We demonstrate state-of-the-art patterns to make these innovations accessible for everyone.

cncf.io

v20180914



Guidance from CNCF





INEFFECTIVE TOOLS & PROCESSES – SO WHAT SHOULD YOU USE?

Considered Thought & Pragmatism ...
(CNCF Recommendations - good start)

Rule of Thumb:
*Automation, API & Horizontally scale
friendly*



#4 The Smiths'



#4 Ignoring Security

(Living Dangerously)





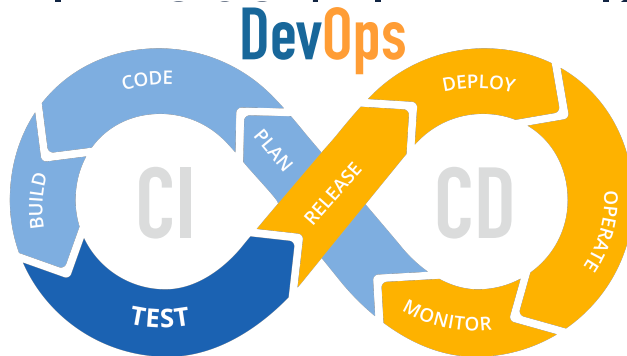
IGNORING SECURITY CONCERNS

- **Enterprise Security has not kept up**



IGNORING SECURITY CONCERNS

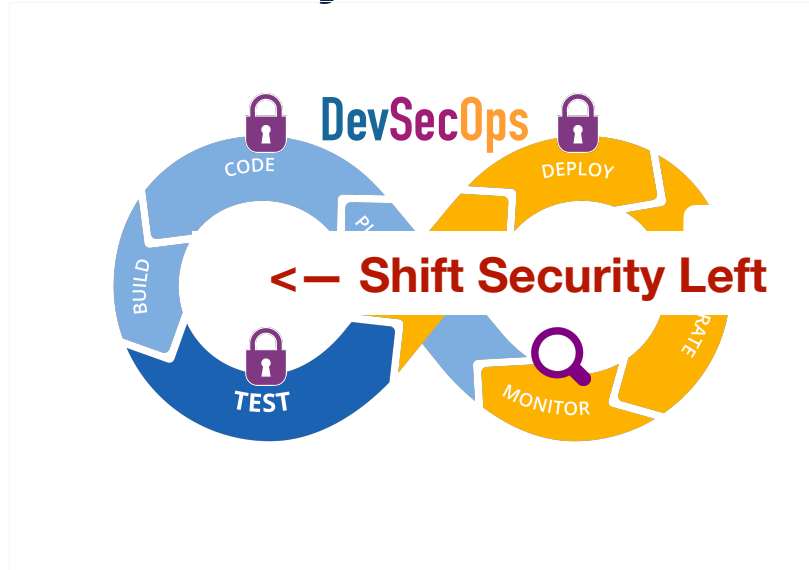
- **Enterprise Security has not kept up**
 - No excuse to ignore it though!
- **Devs/Ops are the new Gatekeepers**





IGNORING SECURITY CONCERNS

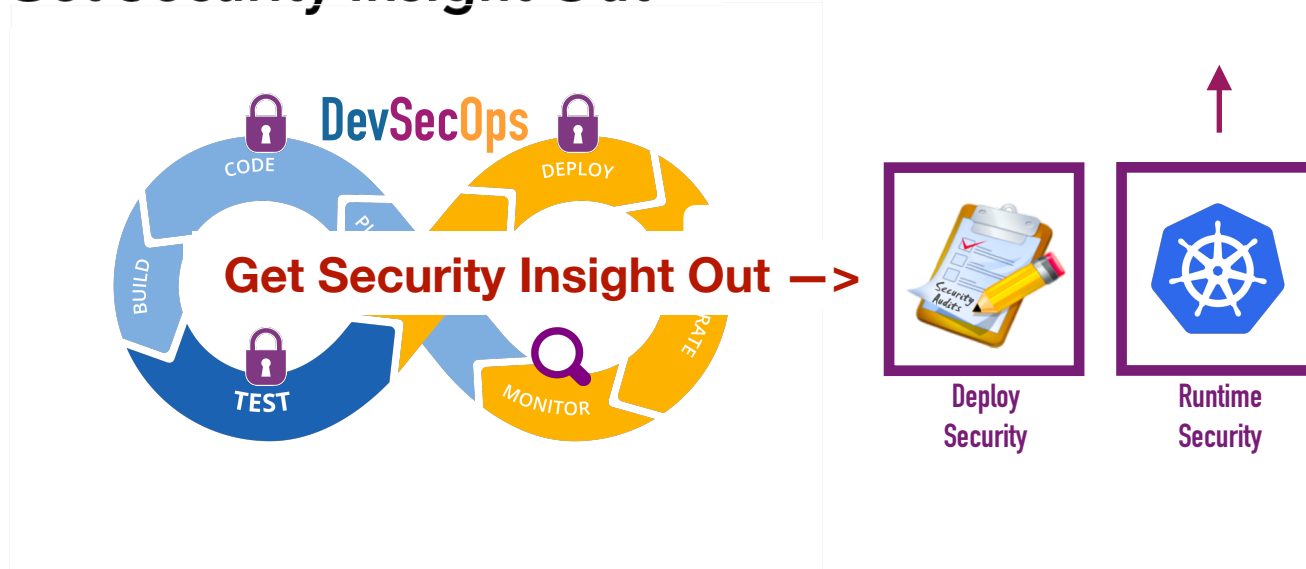
- **Shift Security Left**





IGNORING SECURITY CONCERNS

► Get Security Insight Out





IGNORING SECURITY CONCERNS

▶ Get Security Insight Out

- Help a CISO, help yourself
- Provide tools/reports to help understand new world



[BIZ & IT](#)
[TECH](#)
[SCIENCE](#)
[POLICY](#)
[CARS](#)
[GAMING & CULTURE](#)
[FORUMS](#)

CRYPTOCURRENCY JACKING —

Tesla cloud resources are hacked to run cryptocurrency-mining malware

Crooks find poorly secured access credentials, use them to install stealth miner.

DAN GOODIN · 2/20/2018, 7:21 PM

Scott Olson | Getty Images

[Enlarge](#)



IGNORING SECURITY CONCERNS

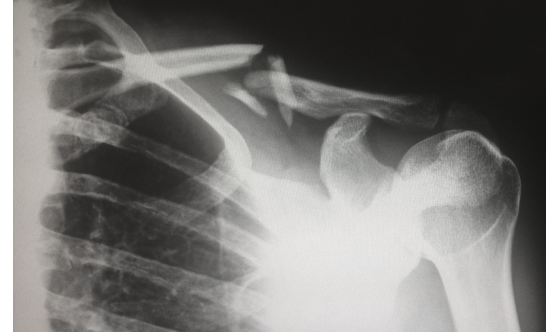
<— Shift Security Left
Get Security Insights Out —>
Engage don't enrage!



#5 Thandi

#5 Not Anticipating Failure

(The Unexpected
Accident)





NOT ANTICIPATING FAILURE

- Test app & platform level sad paths



NOT ANTICIPATING FAILURE

- Test app & platform level sad paths
- Observability



NOT ANTICIPATING FAILURE

- Test app & platform level sad paths
- Observability
- First address unnecessary Chaos ...
then do ... Chaos Engineering





NOT ANTICIPATING FAILURE

- Test app & platform level sad paths
- Observability
- First address unnecessary Chaos ...
then do ... Chaos Engineering
- **Optimise for Recovery!**



**Failure is only really failure
if you fail to learn from it**

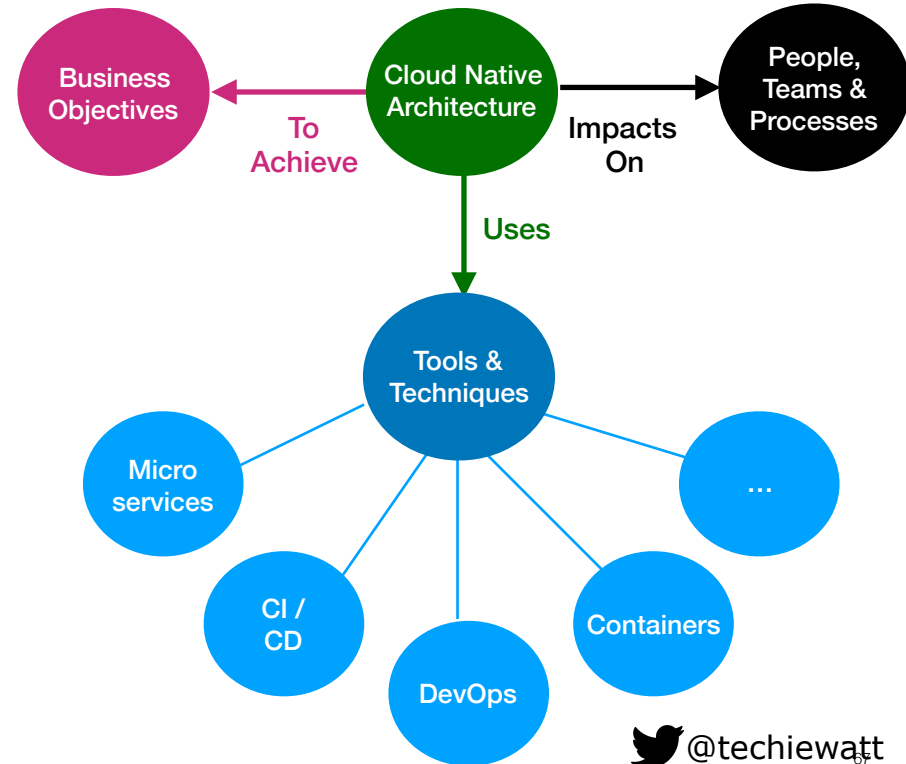


Summary & Principles for Success



THE CLOUD NATIVE JOURNEY

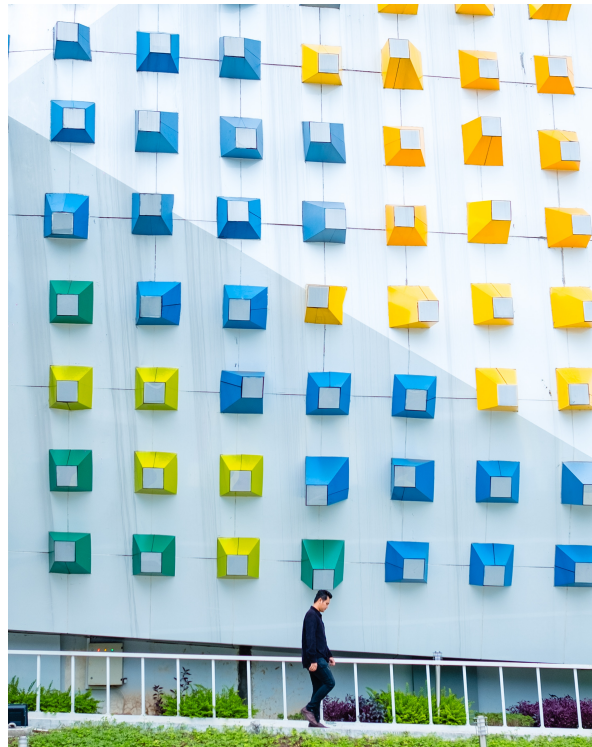
- Needs A Different
 - Approach
 - Tooling
 - Skills





THE CLOUD NATIVE JOURNEY

- Needs To Cohesively Address:
 - App Architecture
 - Ops
 - Infrastructure





PRINCIPLES FOR SUCCESS

- Don't take on too much too quickly
- Acquire enough expertise to journey safely
- Choose your Tools wisely
- Engage don't enrage Security
- Anticipate, Plan and Actively Test for Failure



Thanks!

Get in touch if you're looking for a partner
to help on your Cloud Native Journey!

@techiewatt



 @techiewatt

goto;
chicago



Click 'Rate Session'

Rate **5** sessions to get the
supercool GOTO reward